





**SPACIOUS MAIN DOOR, TWO BEDROOM FLAT WITH PRIVATE GARDEN SET WITHIN PAISLEY TOWN CENTRE.**

This well proportioned property offers main door access, elevated from the roadside by a small external staircase.

Hunter Street is located just off the A726 in Paisley town centre, only 500m from Paisley Gilmour Street Station. The property is well located for all local amenities being only a short walk from the Piazza shopping centre. Access to and from Glasgow city centre is provided by regular rail and bus links whilst Glasgow airport is only two miles away.



<b>Property Type</b>	Main door flat
<b>Bedrooms</b>	2
<b>Bathrooms</b>	2
<b>Reception Rooms</b>	1
<b>Parking</b>	On-street parking
<b>Outdoor Space</b>	Private rear garden
<b>Council Tax Band</b>	D



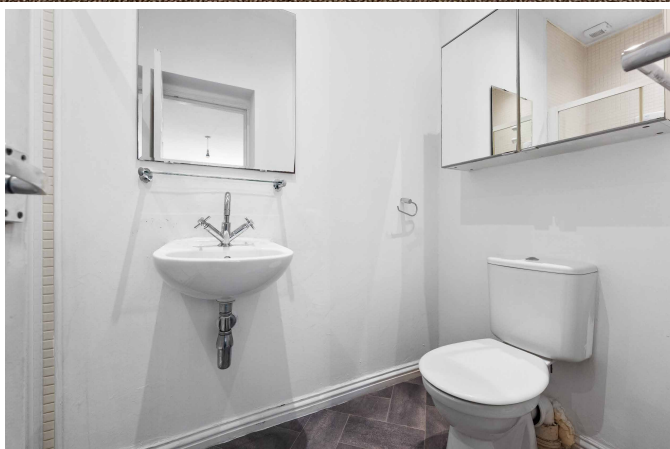


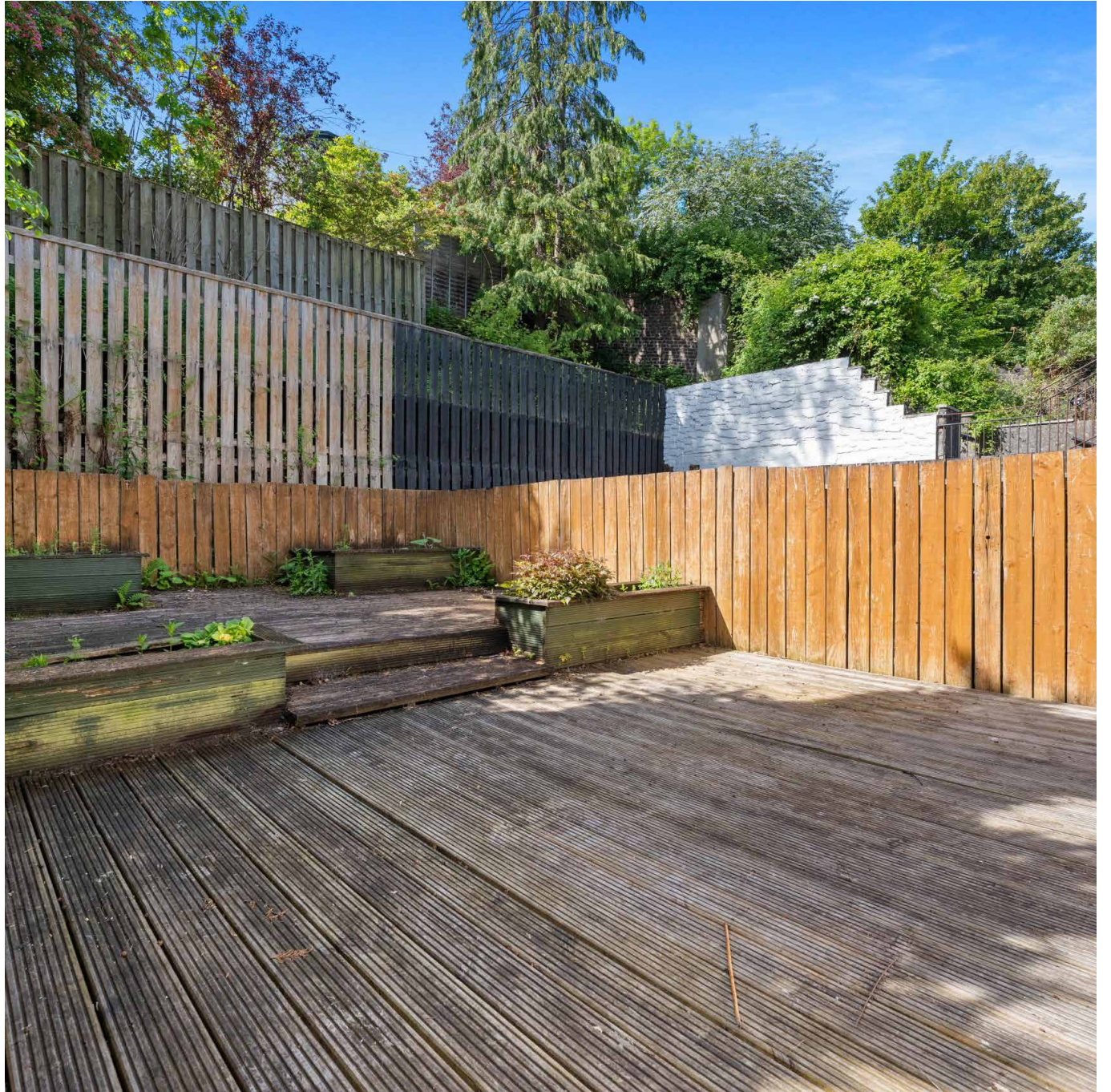
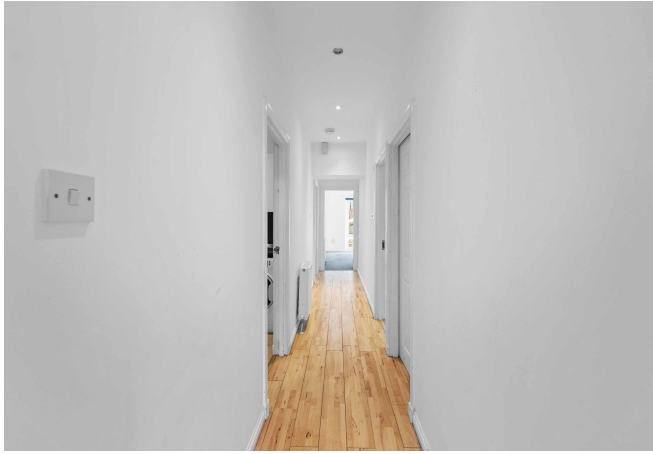
## ACCOMMODATION

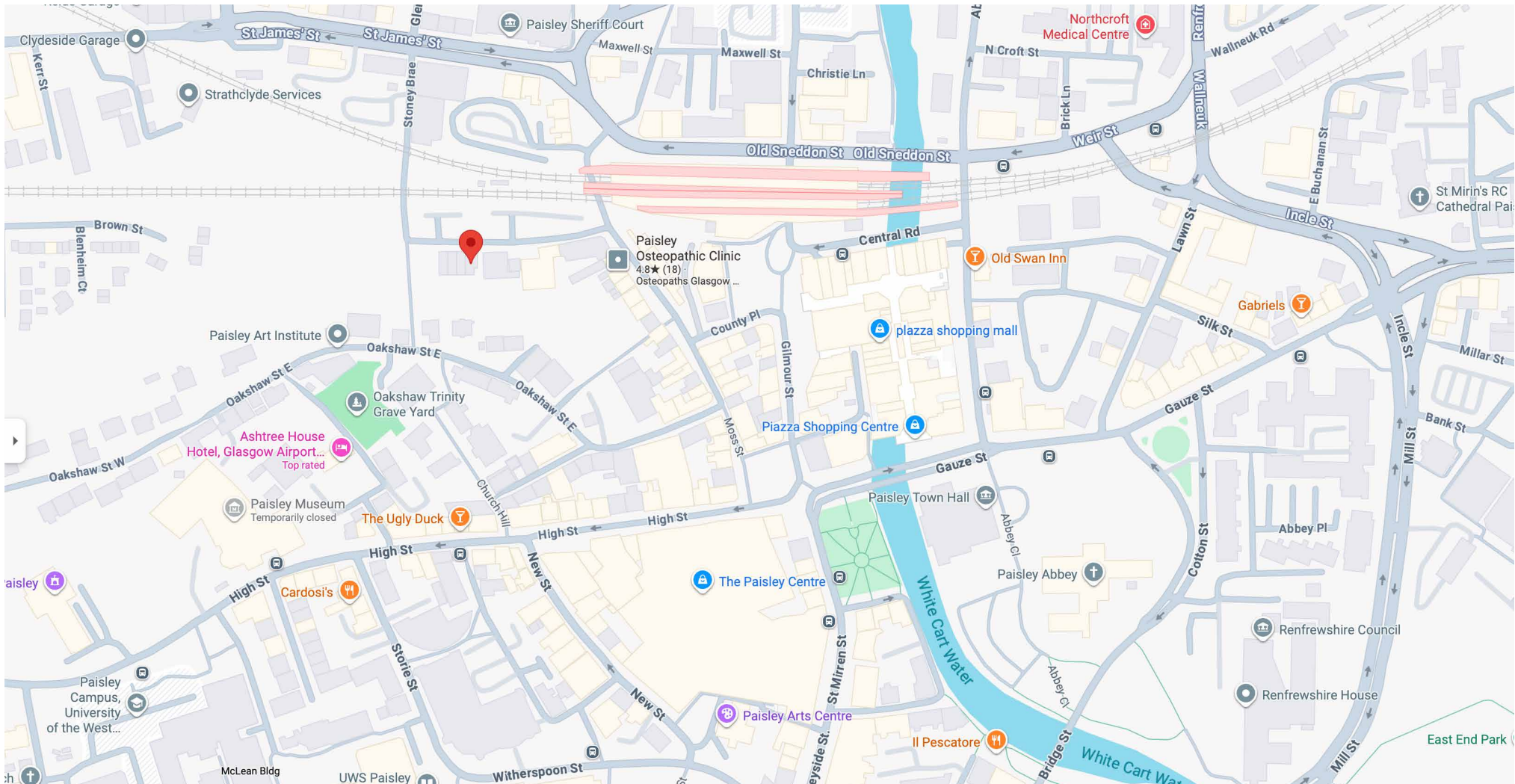
On entering the accommodation, an entrance vestibule leads to a very spacious lounge and dining room, with ample floorspace for furniture. A door from the lounge walks through to a hallway which gives access to the remaining rooms. There is a good sized fitted kitchen with neutral cupboards and work surfaces alongside integrated appliances, a large walk in storage area that has potential for a home office or study, and a bathroom with shower over bath. To the rear of the property, there are two double bedrooms, both of which have direct access via patio doors to the garden, with the principal bedroom benefitting from an en-suite shower room.

The garden is slightly stepped and has been decked for ease of maintenance, providing a rare private space so close to the centre of Paisley.

The property benefits from gas central heating and double glazed windows.







Thomson Residential  
667 Clarkston Road, Netherlee  
Glasgow, G44 3SE

P: 0141 639 1233 | E: mail@thomson-residential.co.uk

[THOMSON-RESIDENTIAL.CO.UK](http://THOMSON-RESIDENTIAL.CO.UK)



Whilst we endeavour to make these particulars as accurate as possible, they do not form part of any contract or offer nor are they guaranteed. Measurements are approximate. If there is any part of these particulars that you find misleading or simply wish clarification on any point, please contact our office immediately where we will endeavour to assist you in any way possible.