



**THOMSON**  
RESIDENTIAL

**2 2/1 HAUGHVIEW TERRACE**

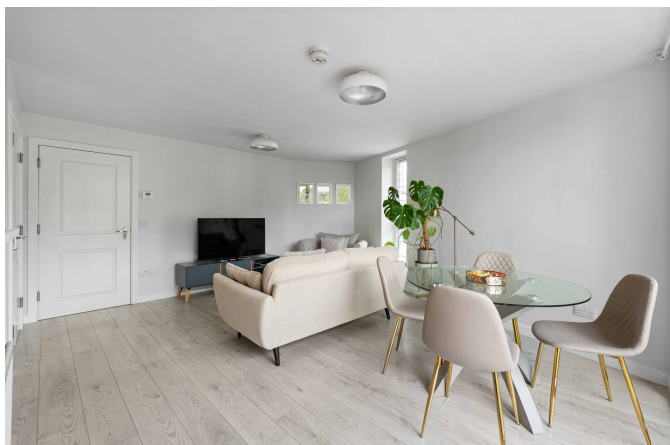
OATLANDS, G5 0LN



**WELL PRESENTED MODERN  
TWO BEDROOM FLAT** LOCATED  
WITHIN THE POPULAR OATLANDS  
DEVELOPMENT SOUTH OF  
GLASGOW CITY CENTRE.

Haughview Terrace is located in the desirable Oatlands development beside Richmond Park, approximately 1 mile south of Glasgow city centre. There are a good range of amenities available locally, with a convenience store and café a short walk from the flat. The Crown Street Retail Park is less than a mile from the property which hosts a good range of high street shops including Aldi, Costa and a JD Gym.

Public Transport links are available through both bus and rail, with bus routes located on Caledonia Road, Cathcart Road and Gorbals Street, and Glasgow's Subway Link offering access to City Centre, West End and South Side. The M74 Motorway is located nearby for commuters.



<b>Property Type</b>	Second Floor Apartment
<b>Bedrooms</b>	2
<b>Bathrooms</b>	2
<b>Reception Rooms</b>	1
<b>Parking</b>	Residents' Parking
<b>Outdoor Space</b>	Balcony
<b>Council Tax Band</b>	C





## ACCOMMODATION

The property is located on the second floor of a modern development, and sits amongst similar properties with an open outlook.

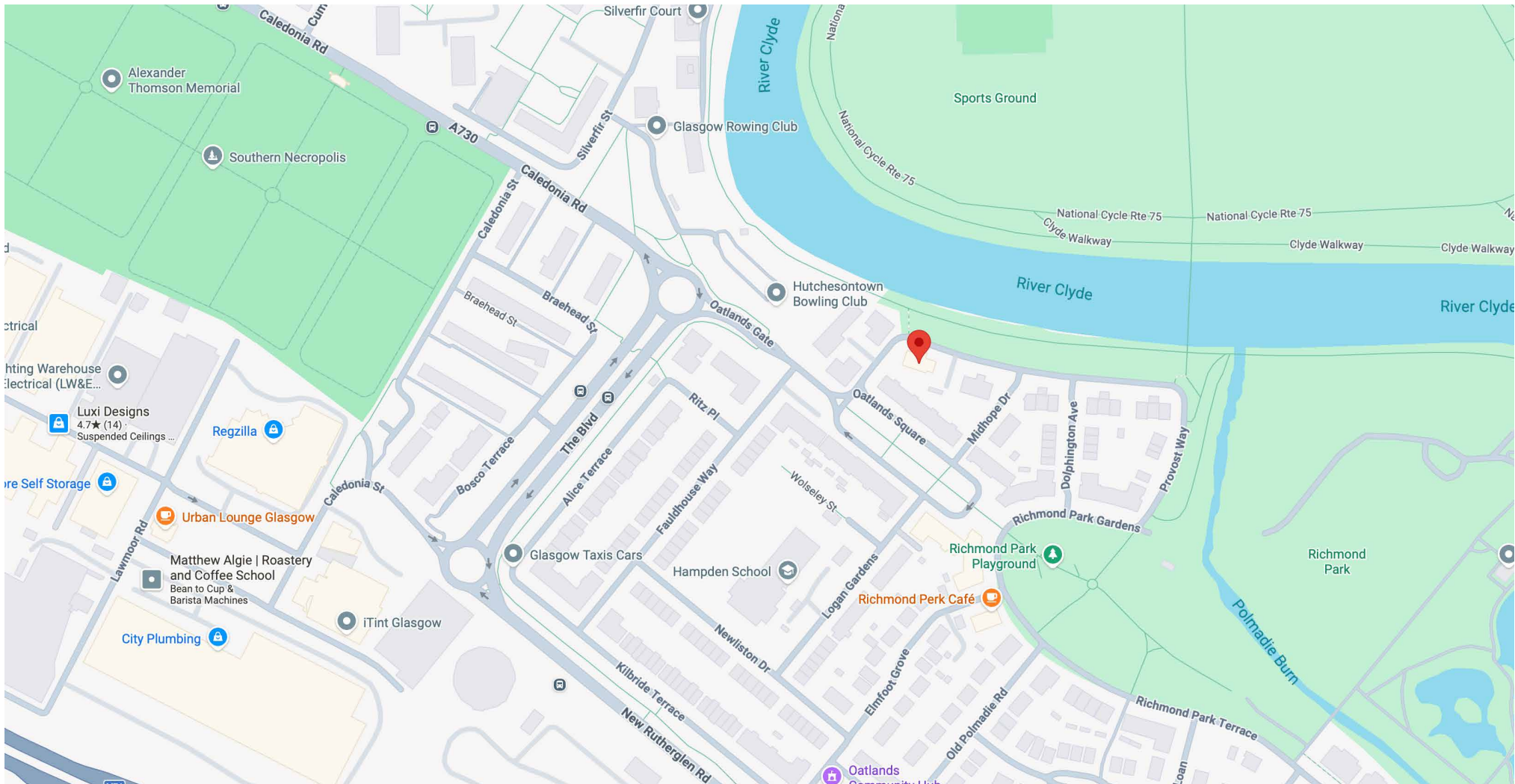
Entering through a well maintained communal stair with security entry and lift access, a spacious hallway leads to all rooms.

There is a principal bedroom with built-in wardrobes and a modern en-suite shower room, a further double bedroom, a spacious lounge with dual aspect which is open plan to a modern fully fitted dining kitchen and a family bathroom with shower over bath. A highlight is the balcony accessed from the lounge which overlooks the riverside.

The property benefits from gas central heating and there are double glazed windows throughout. Residents' parking is available directly outside the property.







**THOMSON**  
RESIDENTIAL

Thomson Residential  
667 Clarkston Road, Netherlee  
Glasgow, G44 3SE

P: 0141 639 1233 | E: [mail@thomson-residential.co.uk](mailto:mail@thomson-residential.co.uk)

[THOMSON-RESIDENTIAL.CO.UK](http://THOMSON-RESIDENTIAL.CO.UK)



Whilst we endeavour to make these particulars as accurate as possible, they do not form part of any contract or offer nor are they guaranteed. Measurements are approximate. If there is any part of these particulars that you find misleading or simply wish clarification on any point, please contact our office immediately where we will endeavour to assist you in any way possible.